



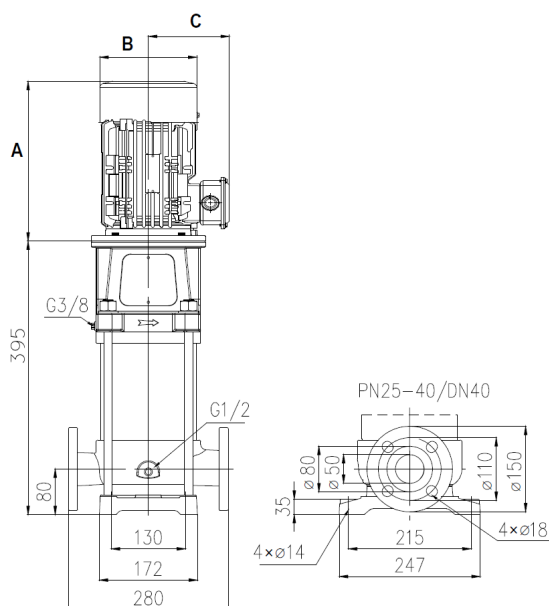
TECHNICAL DATA

RATED FLOW [M3/H]	8 m ³ /hr
MAX. FLOW	12 m ³ /hr
MAX. HEAD	42 m
OPTIMUM OPERATING RANGE	5m ³ /hr @ 39.8m 46.1% eff
	12m ³ /hr @ 29m 63.2% eff
WORKING AIR TEMP	0°C – 40°C
LIQUID TEMPERATURE	-15°C – 120°C
HIGHEST EFFICIENCY	63.6%
MAXIMUM PUMP PRESSURE	33 bar
NET WEIGHT (KG)	38.6 kg

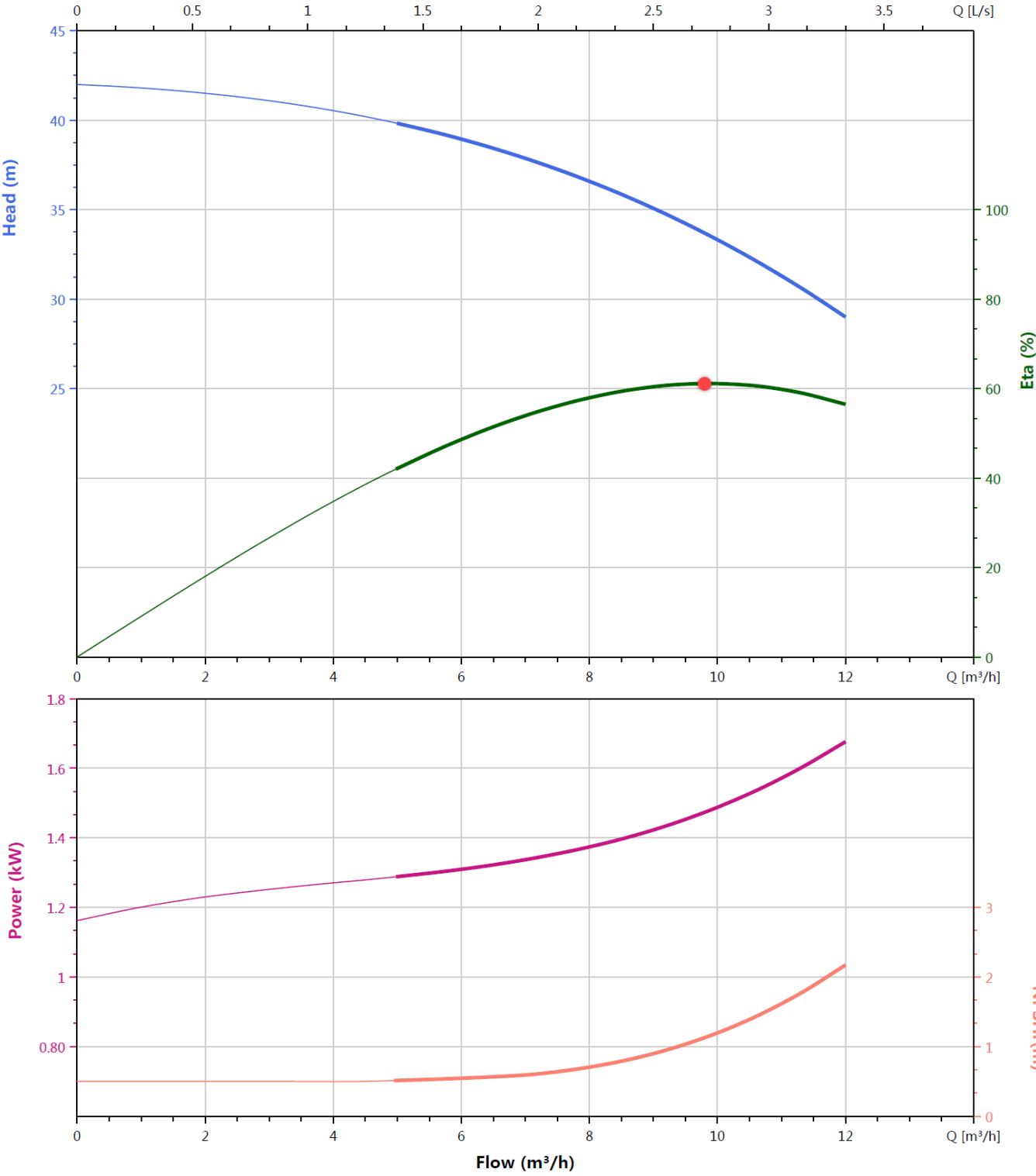
RATED VOLTAGE/CURRENT	3ph 415V +10% -6% 3.3A
	3ph 230V +10% -6% 5.6A
POWER (KW)	1.5kW 2-pole
MOTOR IP RATING	IP55
MOTOR INSULATION	Class F
MOTOR EFFICIENCY STD	I.E.3
MOTOR EFFICIENCY	84.2%
COS Ø	0.84
MECHANICAL SEAL	SVH-L-16
OUTLET DIN FLANGE	DN40

DIMENSIONS

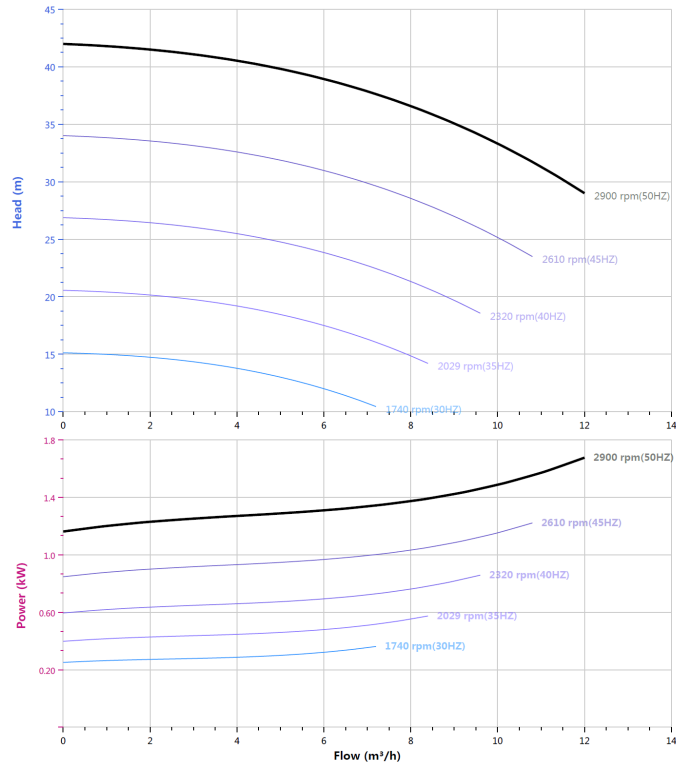
HEIGHT A	350
DIAMETER B	190
RADIUS C	155



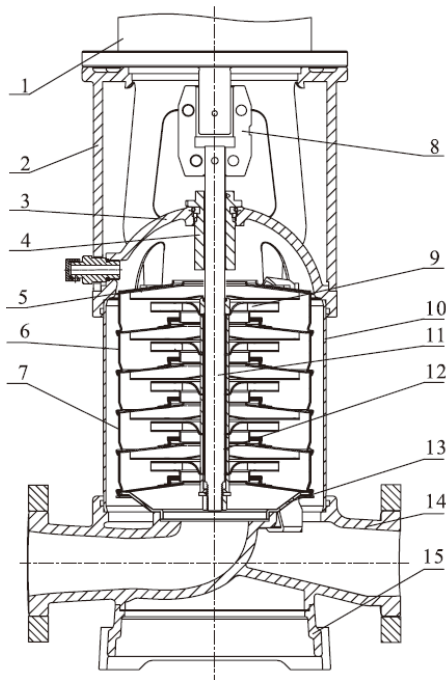
HYDRAULIC CURVE



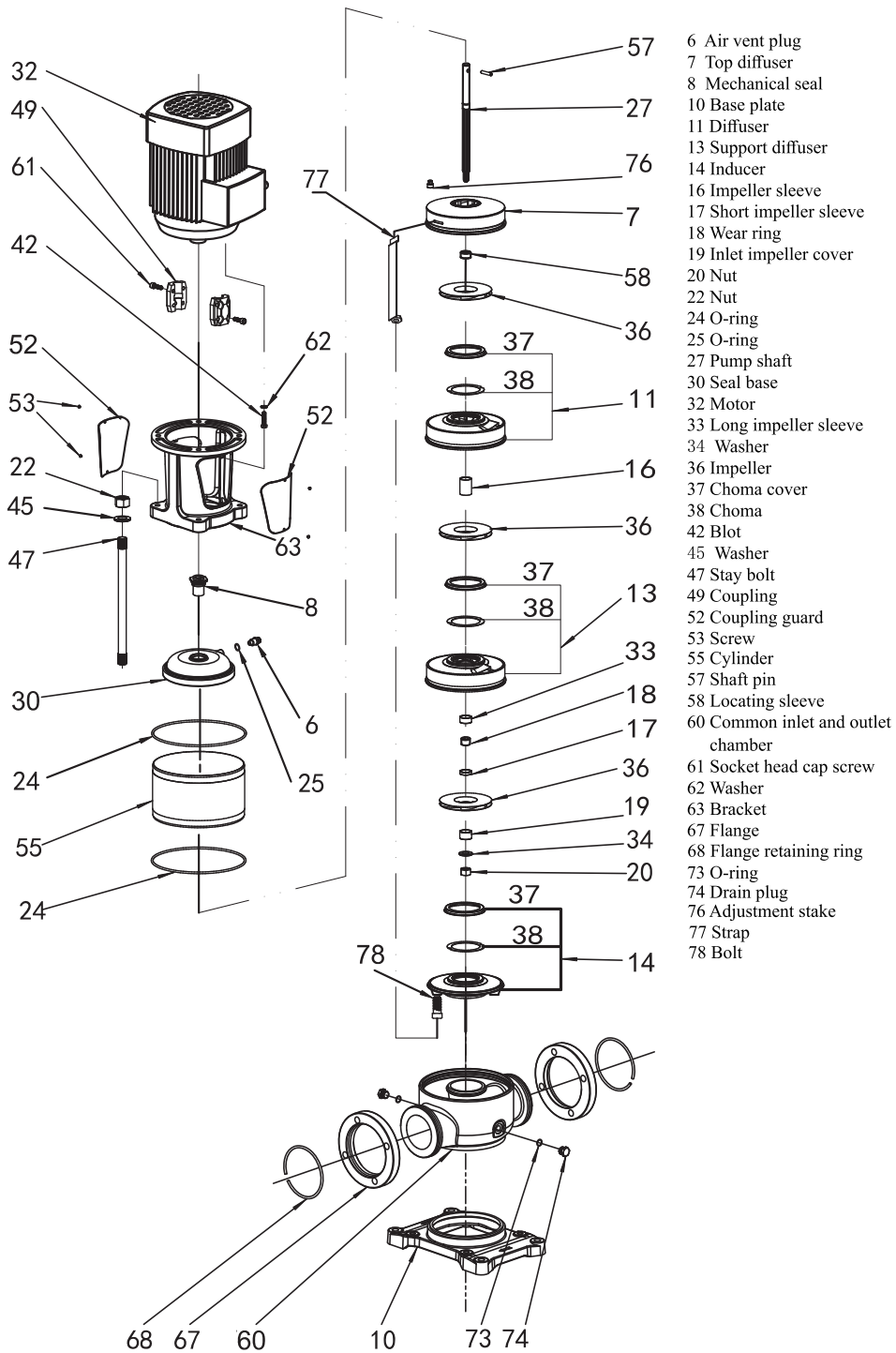
VFD CURVE



CUTAWAY



1	Motor	/
2	Bracket	Ductile Cast Iron
3	Seal Base	Stainless / Ductile Cast Iron
4	Mechanical Seal	SVH-L-16
5	Top Diffuser	Stainless Steel
6	Diffuser	Stainless Steel
7	Support Diffuser	Stainless Steel
8	Coupling	Stainless Steel
9	Impeller	Stainless Steel
10	Cylinder	Stainless Steel
11	Shaft	Stainless Steel
12	Intermediate Bearing	SiC / WC
13	Inducer	Stainless Steel
14	Inlet/Outlet Chamber	Stainless Steel / Ductile Cast Iron
15	Base	Ductile Cast Iron



WARRANTY / CERTIFICATIONS

